

MONTHLY MEMBERSHIP PROGRESS REPORT

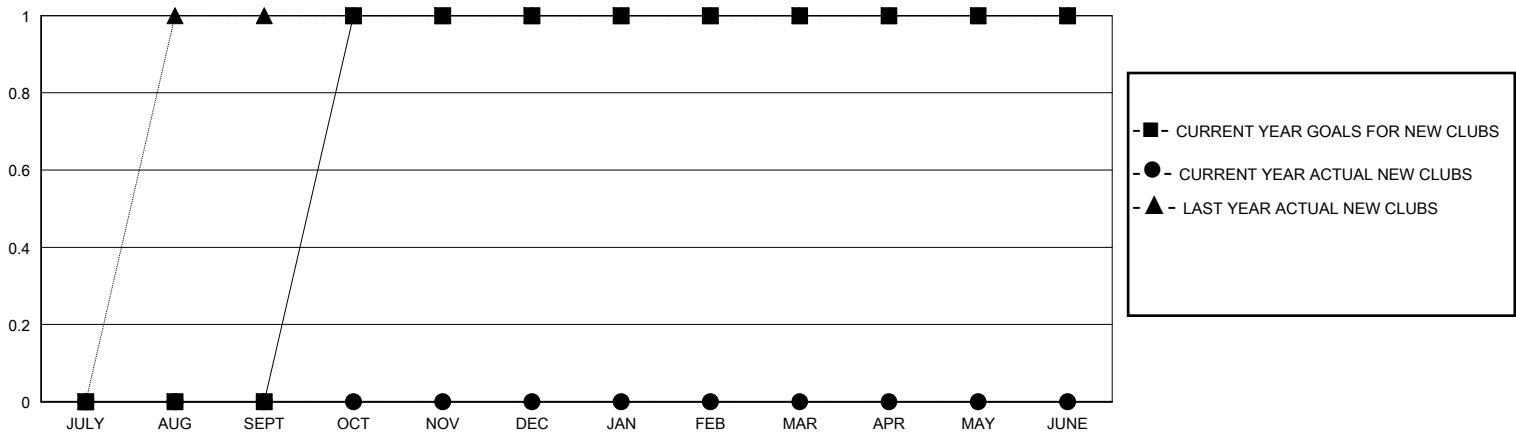
District 27 D2

Results as of: 5/31/2025

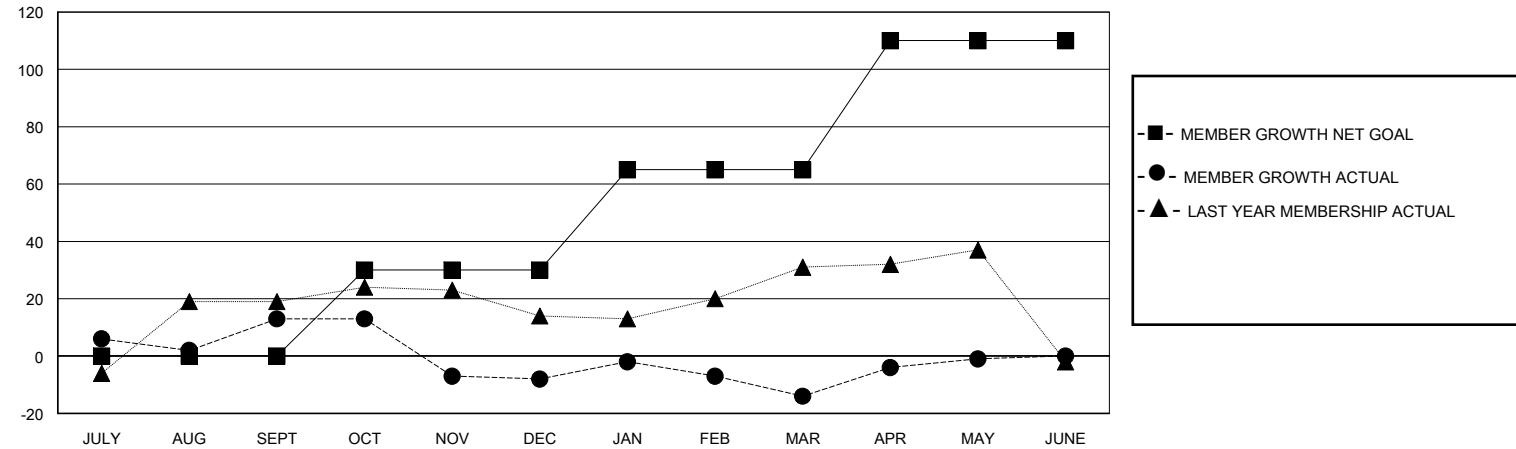
GMT: LOCATION WISCONSIN GMT CA

| Clubs | | | | Members | | | |
|-----------------------|---------------|-----------|---------------|-----------------------|------------------------|----------------------|--|
| RESULTS FOR 2024-2025 | | | | RESULTS FOR 2024-2025 | | | |
| QUARTER | NEW CLUB GOAL | NEW CLUBS | DROPPED CLUBS | QUARTER | MEMBER GROWTH NET GOAL | MEMBER GROWTH ACTUAL | DROPPED MEMBERS ACTUAL (including transfers) |
| JULY/AUG/SEPT | 0 | 0 | 0 | JULY/AUG/SEPT | 0 | 48 | 29 |
| OCT/NOV/DEC | 1 | 0 | 0 | OCT/NOV/DEC | 30 | 41 | 59 |
| JAN/FEB/MAR | 0 | 0 | 0 | JAN/FEB/MAR | 35 | 33 | 35 |
| APR/MAY/JUNE | 0 | 0 | 0 | APR/MAY/JUNE | 45 | 27 | 11 |

GOALS AND ACTUAL NEW CLUBS CUMULATIVE



GOALS AND ACTUAL MEMBERS CUMULATIVE



| | | |
|---|---|--|
| DROPPED CLUBS: 0 | 33 CLUBS OF 47 ADDED 1 OR MORE NEW MEMBERS | <u>GENDER DISTRIBUTION</u> MALE 1,089 (68.53%) FEMALE 499 (31.40%) |
| <u>DROPPED MEMBERS</u> DECEASED 15 CLUB CANCELLED 0 OTHER 119 TOTAL 134 | CLICK HERE FOR CUMULATIVE MEMBERSHIP DATA | TOTAL FAMILY UNIT MEMBERS 424 FAMILY MEMBERS PAYING HALF DUES 218 |